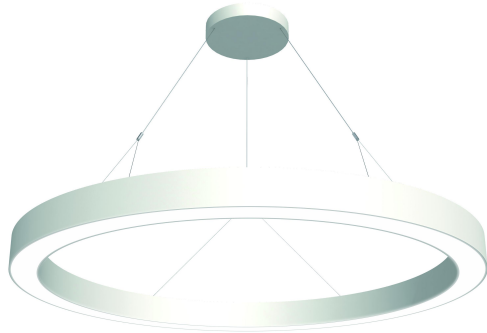


## Stora Small direct-beam LED chandelier



### STORA-LK-LED D1500/830 OS

Ring-shaped luminaire element with opal acrylic glass panels mounted in a ring profile frame made of power-coated aluminium. LED linear modules are evenly mounted on a metal base in the ring profile frame. The luminaire is suspended by six trapezoidal wire pendants with ceiling fixture and transparent connecting cable with round ceiling junction box. The cable length can be adjusted at the ceiling junction box, the steel wire can be steplessly height adjusted. The steel body of the ceiling junction box houses the electrical components and electronic ballast. Electrical connection by means of connector block with cable strain relief. Mechanical ceiling fixture by means of an oblong hole screw connection to a round powder-coated mounting box. The luminaire is configured with heat-resistant wiring. Homogeneous illumination of the light surface. Also in a dimmable version. Light colours 4000 K (840) and 3000K (830).

Protection rating IP20, Protection class I.

Colour:

Housing - similar to RAL 9016 white silk matt;

Frame - similar to RAL 9016 white silk matt

#### Lamps

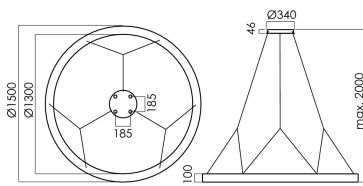
LED-M 84 W

#### Ballast

LED Driver

#### Prod. code

SPC0620020



Dimens. [mm]			Weight [kg]				
L	B	H					
1500	1500	100	-				

## Stora Small direct-beam LED chandelier

